



www.pratikel.com

aluminium panel radiator



Pratikel, specialized in heating and air conditioning sector, was founded in 2004, in Izmir, Turkey. All of our products have the confidence of up to date technology, strict test procedure, elegant design, high performance and comparable cost effect.

Pratikel's heating division is exporting to more than 25 countries today, with main product range consists of steel radiator, towel rail, steel boiler, cast boiler, aluminium radiator, combi boiler, condensing boiler and storage tanks. Total closed area of all factories is 30k sqm, located in Izmir.

In this catalogue, you will find elegant, economic and efficient models of aluminium panel radiators, having the following advantages;

- Higher corrosion resistance rather than the other types,
- Therefore, can be used for many years without maintenance,
- By light weight, easy to move and install, as well as lower load to the wall of the buildings,
- Available to be applied by desired dimensions,
- Can be used billateral surfaces,
- Easy to clean by its flat surface,
- By slim structure, it expands your living area,,

We hope to meet at our dynamic and practical R&D solutions and having long term partnerships in the global markets.





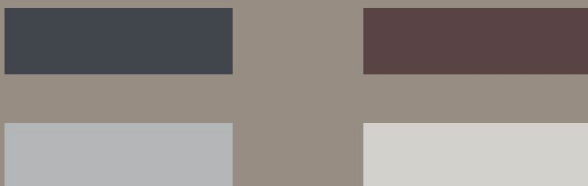
PRATIHEL aluminium panel radiators are manufactured section by section as the dimensions and distances of each section is given on the related charts.

SLIMPAN aluminium radiators are manufactured by 12 different heights from 300 mm to 1800 mm. Heat outputs are calculated according to DIN EN442 standards assuming the comfort room conditions as 20 °C, and water inlet/outlet as 75 °C - 65 °C.

SLIMPAN model has “Sealed Pass Connection System” which prevents the loud production issues on the aluminium radiators. Rather than other classic models, SLIMPAN has a slim design custom developed for the limited spaces. By this slim design also it appears elegant even in the large rooms.

MODEL	HEIGHT	LENGTH	WIDTH	CENTRE DISTANCE OF EACH SECTION	WEIGHT	WATER CAPACITY	HEAT OUTPUT $\Delta T=50$ (75-65 °C)	
	mm	mm	mm	mm	kgs	lt	Watt	Kcal/h
SLIMPAN0300	300	42	37	270	0.25	0.06	21	18
SLIMPAN0400	380	42	37	350	0.31	0.07	26	22
SLIMPAN0500	480	42	37	450	0.38	0.09	31	27
SLIMPAN0600	580	42	37	550	0.45	0.11	37	32
SLIMPAN0700	700	42	37	670	0.56	0.14	47	40
SLIMPAN0800	800	42	37	770	0.60	0.15	51	44
SLIMPAN0900	880	42	37	850	0.62	0.16	54	46
SLIMPAN1000	1000	42	37	970	0.68	0.18	61	52
SLIMPAN1200	1200	42	37	1170	0.79	0.21	72	62
SLIMPAN1500	1500	42	37	1470	0.96	0.25	90	77
SLIMPAN1600	1600	42	37	1570	0.99	0.26	95	82
SLIMPAN1800	1800	42	37	1770	1.08	0.28	106	91

Color Options



Pratikel may change technical specifications without any prior notice.

slimpan

stylid

PRATIKEL aluminium panel radiators are manufactured section by section as the dimensions and distances of each section is given on the related charts.

STYLID aluminium radiators are manufactured by 12 different heights from 300 mm to 1800 mm. Heat outputs are calculated according to DIN EN442 standards assuming the comfort room conditions as 20 °C, and water inlet/outlet as 75 °C - 65 °C.

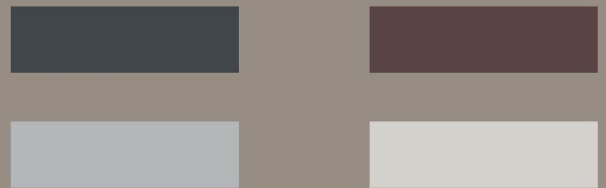


SLTYLID model has a custom developed top grill design. It is a different appearance of elegance who are looking for alternative shapes. Efficiency of the radiator is protected by the homogenous distribution of the grooves.

MODEL	HEIGHT	LENGTH	WIDTH	CENTRE DISTANCE OF EACH SECTION	WEIGHT	WATER CAPACITY	HEAT OUTPUT	
	mm	mm	mm	mm			Watt	Kcal/h
STYLID0300	300	77	60	270	0.55	0.10	48	41
STYLID0400	380	77	60	350	0.68	0.12	58	50
STYLID0500	480	77	60	450	0.84	0.15	72	62
STYLID0600	580	77	60	550	0.98	0.18	85	73
STYLID0700	700	77	60	670	1.23	0.23	107	92
STYLID0800	800	77	60	770	1.31	0.25	117	101
STYLID0900	880	77	60	850	1.36	0.26	124	107
STYLID1000	1000	77	60	970	1.50	0.29	140	120
STYLID1200	1200	77	60	1170	1.75	0.34	166	143
STYLID1500	1500	77	60	1470	2.12	0.41	205	176
STYLID1600	1600	77	60	1570	2.19	0.42	218	187
STYLID1800	1800	77	60	1770	2.39	0.46	245	211



Color Options



Pratikel may change technical specifications without any prior notice.

PRATIHEL aluminium panel radiators are manufactured section by section as the dimensions and distances of each section is given on the related charts.

ELEGAN aluminium radiators are manufactured by 12 different heights from 300 mm to 1800 mm. Heat outputs are calculated according to DIN EN442 standards assuming the comfort room conditions as 20 °C, and water inlet/outlet as 75 °C - 65 °C.



elegant

ELEGAN model has rather slim design to classic aluminium radiators, therefore its elegance appearance attracts the well designed rooms and creates a beautiful atmosphere.

MODEL	HEIGHT	LENGTH	WIDTH	CENTRE DISTANCE OF EACH SECTION	WEIGHT	WATER CAPACITY	HEAT OUTPUT $\Delta T=50$ (75-65 °C)	
	mm	mm	mm	mm	kgs	lt	Watt	Kcal/h
ELEGAN0300	300	42	60	270	0.33	0.10	27	23
ELEGAN0400	380	42	60	350	0.40	0.12	33	28
ELEGAN0500	480	42	60	450	0.49	0.14	41	35
ELEGAN0600	580	42	60	550	0.58	0.16	48	41
ELEGAN0700	700	42	60	670	0.70	0.20	61	52
ELEGAN0800	800	42	60	770	0.75	0.21	66	57
ELEGAN0900	880	42	60	850	0.78	0.22	70	60
ELEGAN1000	1000	42	60	970	0.86	0.24	79	68
ELEGAN1200	1200	42	60	1170	1.01	0.28	94	81
ELEGAN1500	1500	42	60	1470	1.23	0.34	116	100
ELEGAN1600	1600	42	60	1570	1.27	0.35	123	106
ELEGAN1800	1800	42	60	1770	1.39	0.38	138	119

Color Options



Pratikel may change technical specifications without any prior notice.

PRATIKEL aluminium panel radiators are manufactured section by section as the dimensions and distances of each section is given on the related charts.

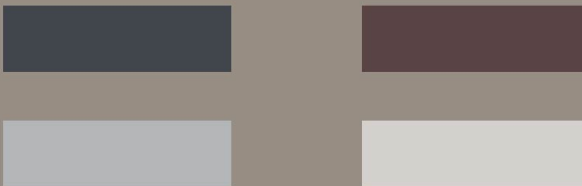
ESTETICA aluminium radiators are manufactured by 12 different heights from 300 mm to 1800 mm. Heat outputs are calculated according to DIN EN442 standards assuming the comfort room conditions as 20 °C, and water inlet/outlet as 75 °C - 65 °C.



ESTETICA model is designed for an estetic slim appearance by holding the utmost efficiency of the aluminium radiator technology. The quality of the aluminium alloys and estetical design, it provided economical and efficient heating solution.

MODEL	HEIGHT	LENGTH	WIDTH	CENTRE DISTANCE OF EACH SECTION	WEIGHT	WATER CAPACITY	HEAT OUTPUT $\Delta T=50$ (75-65 °C)	
	mm	mm	mm	mm	kgs	lt	Watt	Kcal/h
ESTETICA0300	300	80	60	270	0.40	0.07	40	35
ESTETICA0400	380	80	60	350	0.49	0.09	49	43
ESTETICA0500	480	80	60	450	0.60	0.11	59	51
ESTETICA0600	580	80	60	550	0.70	0.13	69	60
ESTETICA0700	700	80	60	670	0.88	0.16	86	74
ESTETICA0800	800	80	60	770	0.95	0.17	95	81
ESTETICA0900	880	80	60	850	0.98	0.19	100	85
ESTETICA1000	1000	80	60	970	1.07	0.20	112	95
ESTETICA1200	1200	80	60	1170	1.25	0.23	132	113
ESTETICA1500	1500	80	60	1470	1.51	0.28	162	139
ESTETICA1600	1600	80	60	1570	1.57	0.29	173	148
ESTETICA1800	1800	80	60	1770	1.71	0.32	194	166

Color Options



Pratikel may change technical specifications without any prior notice.

PRATIHEL aluminium panel radiators are manufactured section by section as the dimensions and distances of each section is given on the related charts.

FUTURIST aluminium radiators are manufactured by 12 different heights from 300 mm to 1800 mm. Heat outputs are calculated according to DIN EN442 standards assuming the comfort room conditions as 20 °C, and water inlet/outlet as 75 °C - 65 °C.



futurist

FUTURIST is the newest model of our aluminium panel radiators until 2021. It has an attractive structure by appearance and economical usage. By our experience, it is an optimized model of efficiency and elegance.

MODEL	HEIGHT	LENGTH	WIDTH	CENTRE DISTANCE OF EACH SECTION	WEIGHT	WATER CAPACITY	HEAT OUTPUT $\Delta T=50$ (75-65 °C)	
	mm	mm	mm	mm	kgs	lt	Watt	Kcal/h
FUTURIST0300	300	100	37	270	0.58	0.07	35	30
FUTURIST0400	380	100	37	350	0.65	0.09	48	41
FUTURIST0500	480	100	37	450	0.75	0.11	61	53
FUTURIST0600	580	100	37	550	0.85	0.13	74	64
FUTURIST0700	700	100	37	670	1.02	0.16	87	75
FUTURIST0800	800	100	37	770	1.09	0.17	100	86
FUTURIST0900	880	100	37	850	1.15	0.19	113	97
FUTURIST1000	1000	100	37	970	1.27	0.20	126	108
FUTURIST1200	1200	100	37	1170	1.46	0.23	152	130
FUTURIST1500	1500	100	37	1470	1.76	0.28	190	164
FUTURIST1600	1600	100	37	1570	1.86	0.29	203	175
FUTURIST1800	1800	100	37	1770	2.06	0.32	229	197

Color Options



Pratikel may change technical specifications without any prior notice.

Pratikel Dis Ticaret Ltd.
Halkapinar Mh. 1490 Sk. No. 5/12 Konak 35170 Izmir, Turkey
Tel: +90 232 459 8554
E-mail: info@pratikel.com



pratikel



www.pratikel.com